

VICTORY

3779 Champion Blvd Winston-Salem, NC 27105
856.428.4200 • 800.523.5008 • Fax: 856.428.7299
www.victoryrefrigeration.com • email: sales@victoryrefrigeration.com

PROJECT: _____
LOCATION: _____
ITEM #: _____
QUANTITY: _____

ULTRASPEC™ SERIES

BOTTOM MOUNT REFRIGERATED DISPLAY ELECTRONIC LOCK MODELS

Featuring: **SecureTemp**_{1.0™}

STANDARD FEATURES

- Secure-Temp 1.0™ Technology
- Electronic Control with Food Safety Lock
- LED Lighting
- Expansion Valve Technology
- 20 Gauge, Stainless Steel Door
- Santoprene Door Gaskets
- Stainless Steel Breaker Strips
- High Performance, Balanced, Bottom-Mounted Refrigeration
- Anti-Corrosion Coated Evaporator Coil
- Stainless Steel Exterior
- Stainless Steel Interior
- Environmentally Safe R-134a Refrigerant for Refrigerators
- Environmentally Safe R-404A Refrigerant for Freezers
- Min. 2.5" Foamed-in-Place Polyurethane Insulation
- Self-Closing Doors with 120° Hold Open Feature
- One Piece, Snap-In Magnetic Door Gasket(s)
- Heated Pressure Relief Vent
- Five (5) Heavy Duty Stainless Steel Shelves per Section
- Accommodates 18" X 26" or 12" X 20" pans
- Adjustable Leveling Legs
- Cam-Lift Hinges, Guaranteed for Life
- 10' Cord and Plug (see electrical data for details)



SECURE-TEMP 1.0™

Secure-Temp 1.0™ is the industry's first and only full service temperature monitoring solution for your kitchen. Secure-Temp 1.0™ is standard on all Victory models and is HACCP compliant and meets NAFEM's data protocol. There is NO software or monthly monitoring fees. Optional add on kits are available for additional units in your kitchen that you want to monitor.

OPTIONS AND ACCESSORIES

- Change Door Swing
- Expansion Valve Technology
- Stainless Steel Finished Back
- 4" Overall Height Casters (Set of 4)
- 220/50Hz, 220/60 Hz Voltages
- Extra Shelves

MODELS

LSR-23-L
LSF-23-L



NOTE: Not all marks refer to all models

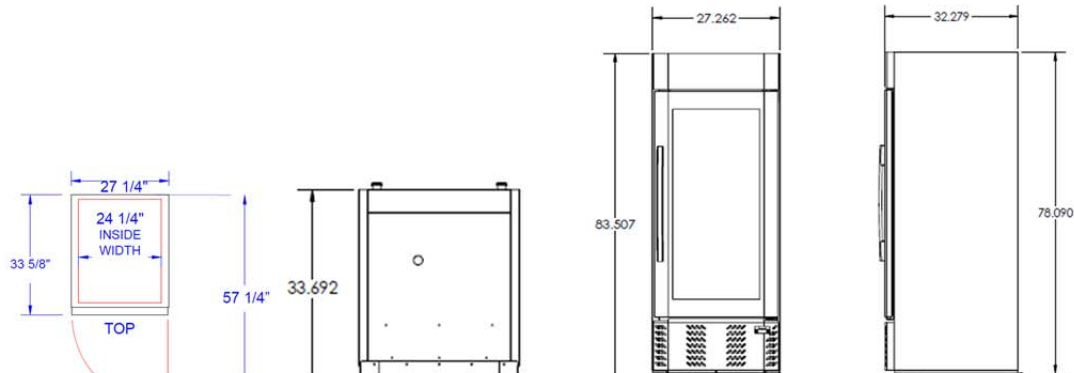
Please refer to www.energystar.gov to view the most up-to-date product listing and performance data

3 Year Parts and Labor Warranty • 5 Year Compressor Warranty

Victory Refrigeration specification sheets are available online at www.victoryrefrigeration.com

APPROVALS:

BOTTOM MOUNT REFRIGERATED DISPLAY



We reserve the right to change specifications and product design without notice. Such revisions do not entitle the buyer to corresponding changes, improvements, additions or replacements for previously purchased equipment. Dimensional tolerances +/- 1/4". Metric dimensions (MM)

LSR/LSF CABINET CONSTRUCTION

The cabinet front, grills and sides are constructed of polished stainless steel. The inside walls and bottom are in anodized aluminum. A minimum of 2.5" polyurethane foam insulation throughout (3.5" on the bottom) ensures energy efficiency. The front grill is snap-on / snap-off allowing easy access for cleaning the condenser.

LSR/LSF ELECTRONIC CONTROL WITH FOOD SAFETY LOCK

Our exclusive V-SERIESTM Electronic Control with Food Safety Lock will lock the unit automatically when the power goes out. When the power is restored, if the power has been out for over "X" minutes, the door will stay locked. The factory preset is 120 minutes. If the temperature has been over "Y" temperature value for "Z" minutes the door will lock. The factory preset value for these parameters are 41° and 90 minutes for Refrigerators, and 32° and 60 minutes for Freezers. "X", "Y" and "Z" are programmable values. Additional standard features on the easy to use V-SERIESTM Electronic Control include **SUPERCOOL Mode**, **Energy Saving Mode**, and multiple audible and visual alarms (minimum temperature, maximum temperature, door ajar, probe failure, clean condenser and compressor protection). The three most recent alarms are stored in memory. SUPERCOOL Mode runs the compressor constantly for a pre-determined amount of time or until a lower set-point has been reached. Energy Saving Mode activates automatically when there are no door openings for a pre-determined period of time.

LSR/LSF REFRIGERATION SYSTEM

Self-contained bottom mount refrigeration system. Expansion valve refrigerant control on freezer provides quick temperature pull down and reduces compressor run time—meaning reduced energy consumption. Includes automatic condensate disposal. Refrigerators utilize ozone friendly R134a refrigerant. Freezers utilize ozone friendly R404A refrigerant and its defrost system is fully automatic, time-initiated and temperature terminated operation.

Freezer product temperatures from -10°F to -15°F.
Refrigerator product temperatures from 36°F to 38°F.

LSR/LSF INTERIOR STORAGE ARRANGEMENTS

Each cabinet section is provided with five (5) heavy-duty, stainless steel epoxy coated shelves. The shelves are adjustable in one inch increments.

CHARACTERISTICS

REFRIGERATOR

FREEZER

DIMENSIONAL DATA

Width, Overall (in.)	27 1/4"	27 1/4"
Depth, Overall (inc. Handles)	33 3/4"	33 3/4"
Height Overall (in.)	78"	78"
Depth, Door(s) Open 90° (in.)	60	60
Capacity Net (cu. ft.)	23	23
No. of Full Doors	1	1
No. of Shelves	5	5

ELECTRICAL DATA

Cabinet Voltage	115/60/1	115/60/1
Total Amperes	5.8	10.9

REFRIGERATION DATA

Condensing Unit Size (HP)	1/3 HP	1/2 HP
Refrigerant	R-134a	R-404a

NOTE: Plug style, voltage and full load amps may vary depending on certain options selected such as special voltages and compressor upgrades.

CRATED WEIGHT

ONE SECTION	300LBS	325 LBS
-------------	--------	---------

**** Remote units use R404a refrigerant standard and come with 6" legs.**