

# VICTORY

110 Woodcrest Road, Cherry Hill, NJ 08003-3648  
 856.428.4200 • 800.523.5008 • Fax: 856.428.7299  
 www.victoryrefrigeration.com • email: sales@victoryrefrigeration.com



PROJECT: \_\_\_\_\_

LOCATION: \_\_\_\_\_

ITEM #: \_\_\_\_\_

QUANTITY: \_\_\_\_\_

## ULTRASPEC™ SERIES

## UNDERCOUNTER REFRIGERATORS

### STANDARD FEATURES

- Stainless Steel Front, Top, Sides and Interior
- Self-Contained Refrigeration System
- Environmentally Safe R-134a Refrigerant
- Dial Thermometer
- Plasticized Evaporator Fin Coils
- Non-Electric Condensate Evaporator
- Foamed-in-Place Polyurethane Insulation
- Self-Closing Doors with 120° Hold Open Feature
- Cam-Lift Hinges, Guaranteed for Life
- Ergonomically Correct Door Handles, Guaranteed for Life
- 6" High, Adjustable Stainless Steel Legs
- Stainless Steel Front Louvered Grille
- One Piece, Snap-In Magnetic Door Gasket(s)
- Anti-Condensate Door Perimeter Heaters
- Stainless Steel Interior Door Liners
- High Impact, Non-Conducting Thermal Breaker Caps
- Two (2) Epoxy Coated Wire Shelves per Door Section
- Cord and Plug (see electrical data for details)

### OPTIONS AND ACCESSORIES

- Remote Models (Two and Three Sections Only)
- Stainless Steel Case Back
- Three (3) Drawers in Lieu of One or More Doors
- Stainless Steel 4" High Backsplash
- Stainless Steel Shelves
- 6" Overall Height Casters
- Adjustable Tray and Pan Slides
- Optional Voltages
- Two (2) Year Service Warranty



URS-1-S1

### MODELS



Stainless Steel  
Exterior and Interior

URS-1-S1  
URS-2-S1  
URS-3-S1

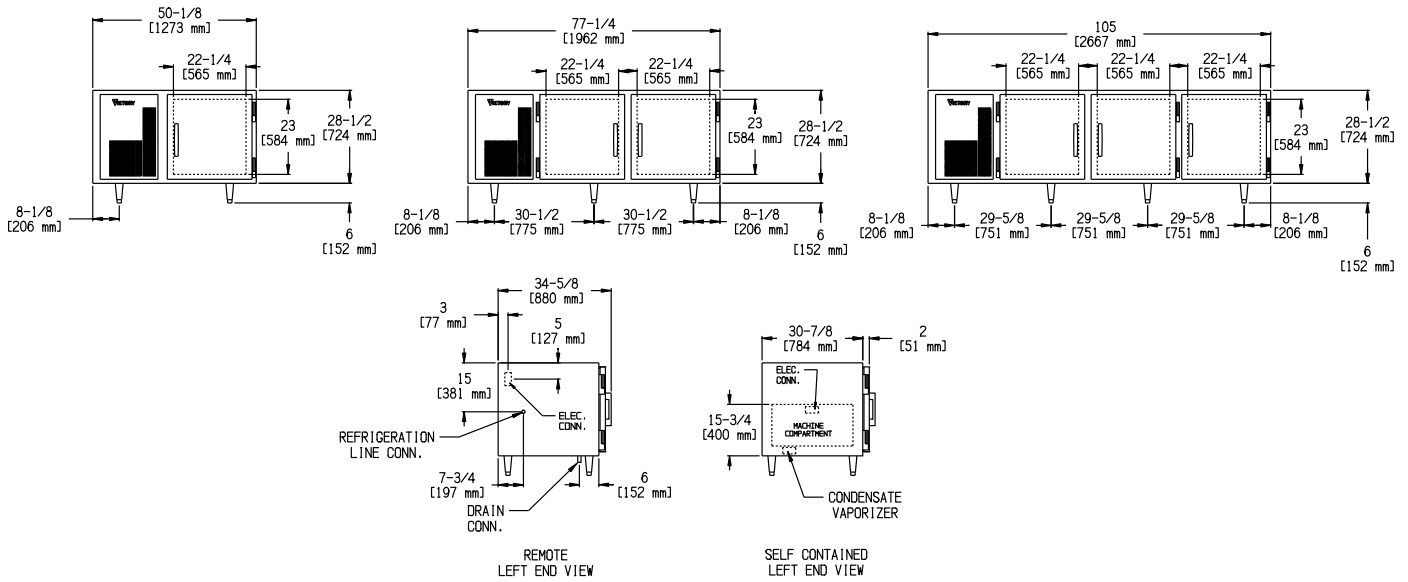


NOTE: Not all marks refer to all models

**1 Year Parts and Labor Warranty • 5 Year Compressor Warranty**

Victory Refrigeration specification sheets are available online at [www.victoryrefrigeration.com](http://www.victoryrefrigeration.com)

APPROVALS:



We reserve the right to change specifications and product design without notice. Such revisions do not entitle the buyer to corresponding changes, improvements, additions or replacements for previously purchased equipment.

Dimensional tolerances +/- 1/4". Metric dimensions (MM)

**CABINET CONSTRUCTION**

The cabinet front, doors, sides, top and interior are constructed of heavy gauge, polished stainless steel to maintain an attractive appearance after years of heavy use. Foamed-in place polyurethane insulation throughout the cabinet and doors ensures the ultimate in energy efficiency. The front grille is removeable to provide easy access to the condenser and facilitate cleaning.

**DOOR CONSTRUCTION**

The doors are heavy gauge, polished stainless steel with a stainless steel interior liner. Each door has an ergonomically correct vertical handle and a one-piece, self-adjusting magnetic gasket for a positive seal. The cam-lift door hinges are self-closing and have a hold-open feature at 120° which facilitates product loading. Condensate control wires are located around the door opening and help prevent condensation from forming on the front of the cabinet in high humidity environments. The wires are concealed and protected by a high impact, non-conducting thermal breaker cap.

**REFRIGERATION SYSTEM**

A high efficiency, air-cooled, self-contained refrigeration system is mounted on the side of the cabinet and located behind the easily removable front louvered grille. Environmentally friendly R-134a refrigerant is efficiently metered by a capillary system providing a constant, safe operating temperature and quick "recovery" under the most demanding conditions. The hermetically sealed system is designed to operate at 38°F. The fans and cooling coil, which is plasticized to resist food acids, move cold air from side to side, top to bottom to keep food product at a safe storage temperature. All condensate water is disposed of automatically by the energy efficient, non-electric condensate evaporator.

**INTERIOR STORAGE ARRANGEMENTS**

Each cabinet section is provided with two (2) heavy-duty, epoxy coated wire shelves. The shelves are adjustable in one inch increments. A wide door opening allows for the use of a variety of optional pan slide configurations including 18" x 26" and 12" x 20" pans.

**CHARACTERISTICS**

**DIMENSIONAL DATA**

|                               | 1 SECTION | 2 SECTION | 3 SECTION |
|-------------------------------|-----------|-----------|-----------|
| Capacity Net (cubic ft.)      | 8.4       | 18.3      | 28.2      |
| Width*, Overall (in.)         | 50 1/8    | 77 1/4    | 105       |
| *Remote Width, Overall (in.)  | NA        | 60 1/2    | 87 5/8    |
| Depth, Overall (inc. handles) | 34 5/8    | 34 5/8    | 34 5/8    |
| Depth, Door(s) Open 90° (in.) | 58 1/8    | 58 1/8    | 58 1/8    |
| Clear Door Width (in.)        | 22 1/4    | 22 1/4    | 22 1/4    |
| Clear Door Height (in.)       | 23        | 23        | 23        |
| Height Overall (inc. 6" legs) | 34 1/2    | 34 1/2    | 34 1/2    |
| No. of Doors                  | 1         | 2         | 3         |
| No. of Shelves                | 2         | 4         | 6         |
| Shelf Area (square ft.)       | 8.5       | 18.6      | 26.3      |

**ELECTRICAL DATA**

|                         | 1 SECTION | 2 SECTION | 3 SECTION |
|-------------------------|-----------|-----------|-----------|
| Cabinet Voltage         | 115/60/1  | 115/60/1  | 115/60/1  |
| Feed Wires              | 2         | 2         | 2         |
| Condensing Unit Voltage | 115/60/1  | 115/60/1  | 115/60/1  |
| NEMA Plug               | 5-15 P    | 5-15P     | 5-20P     |
| Total Amperes           | 6.4       | 6.4       | 12.2      |

**REFRIGERATION DATA**

|                      | 1 SECTION | 2 SECTION | 3 SECTION |
|----------------------|-----------|-----------|-----------|
| Condensing Unit Size | 1/4 HP    | 1/4 HP    | 1/2 HP    |
| Refrigerant          | R-134a    | R-134a    | R-134a    |

**NOTE:** Plug style, voltage and full load amps may vary depending on certain options selected such as special voltages and compressor upgrades.

**REMOTE APPLICATIONS:** See form V-RRDS1 for remote refrigeration characteristics by model.

**CRATED DIMENSIONS & WTS.**

|               | HT.    | WIDTH  | DEPTH  | FT <sup>3</sup> | LBS |
|---------------|--------|--------|--------|-----------------|-----|
| ONE SECTION   | 34 1/4 | 56 1/4 | 38 3/4 | 43.20           | 465 |
| TWO SECTION   | 34 1/4 | 83 1/4 | 38 3/4 | 63.94           | 515 |
| THREE SECTION | 34 1/4 | 111    | 38 3/4 | 85.25           | 600 |

**NOTE:** In order to provide peak operating performance the cabinet must have a 2 inch all around clearance.