



**Project:**

**Item Number:**

**Quantity:**

**CAYENNE® HEAT STRIPS: HARD WIRED**



Hard Wired Cayenne® Heat Strip with Lights

Standard mounting tabs. See page 4 for other mounting options.



**DESCRIPTION**

The Cayenne® Heat Strip line is intended to be used as a heat source to help maintain food at safe temperatures until served.

**FEATURES**

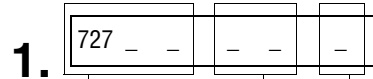
- Structurally engineered aluminum heater housing offers maximum strength with minimal weight
- Recessed dovetail channel allows for installation of decorative trim
- Optional Kool-Touch thermoplastic trim drastically reduces fascia temperature for safer operation
- Reflector generates maximum performance for wider heat dispersion and offers larger temperature zone above 140°F (60° C) for safe food holding
- Anodized bright aluminum heat reflector generates more even heat over food display area
- Reflector/heater assembly is field adjustable allowing operator to direct heat pattern for optimum overhead heat
- Sheathed element for dependability and longer life
- Unique element design offers greater heat dispersion for more effective warming
- Two screws allow quick service access to element
- Stainless steel mounting brackets with preset mounting holes provide proper spacing for safe installation or easy replacement
- Fixed or remote switch installation allows installation flexibility for your operation. Available with infinite or toggle switch
- One year parts and labor warranty. Additional one year warranty on heating element (parts only).
- See Lead Wire Supplied table on page 2 for more detail.
- Lighted units are supplied with the recommended Teflon® coated, shatterproof bulbs. For replacement bulbs, order item 23236.

**Agency Listings**



**MODELS**

1. Select base model number.
2. Select single/dual, voltage, light option suffix.
3. Select control option suffix.



Base Model Number		
Length	Wattage	Model
18" (45.7)	Low	72701
	Medium	72702
	High	72703
24" (60.9)	Low	72704
	Medium	72705
	High	72706
30" (76.2)	Low	72707
	Medium	72708
	High	72709
36" (91.4)	Low	72710
	Medium	72711
	High	72712
42" (106.6)	Low	72713
	Medium	72714
	High	72715
48" (121.9)	Low	72716
	Medium	72717
	High	72718
54" (137.1)	Low	72719
	Medium	72720
	High	72721
60" (152.4)	Low	72722
	Medium	72723
	High	72724
66" (167.6)	Low	72725
	Medium	72726
	High	72727
72" (182.8)	Low	72728
	Medium	72729
	High	72730
84" (213.3)	Low	72731
	Medium	72732
	High	72733
96" (243.8)	Low	72734
	Medium	72735
	High	72736
108" (274.3)	Low	72737
	Medium	72738
	High	72739
120" (304.8)	Low	72740
	Medium	72741
	High	72742
132" (335.2)	Low	72743
	Medium	72744
	High	72745
144" (365.7)	Low	72746
	Medium	72747
	High	72748

Control	
Option	Suffix
No Control	5
Remote Infinite Switch (up to 40 Amp)	7
Remote Toggle	6
Onboard Toggle*	9

\*Not available on high wattage units.

Single/Dual, Voltage & Light Option				
Voltage	Single	Single with	Dual	Dual with
	Suffix	Lights Suffix	Suffix	Lights Suffix
120V	01	11	21	31
208V	02	12	22	32
240V	03	13	23	33

**SELECTING LOW, MEDIUM OR HIGH WATTAGE**

The wattage (low, medium or high) recommended to keep food at ideal temperatures is determined by height – the distance from the Cayenne® Heat Strip to the surface.

	Wattage	Minimum Height	Maximum Height
<b>Over Non-Combustible Surface</b>			
Single	Low	8" (20.3)	11" (27.9)
	Medium	11" (27.9)	16" (40.6)
	High	16" (40.6)	22" (55.8)
Dual	Low	13" (33.0)	18" (45.7)
	Medium	18" (45.7)	25" (63.5)
	High	24" (60.9)	33" (83.8)
<b>Over Combustible Surface</b>			
Single	Low	11" (27.9)	11" (27.9)
	Medium	13" (33.0)	16" (40.6)
	High	16" (40.6)	22" (55.8)
Dual	Low	16" (40.6)	18" (45.7)
	Medium	20" (50.8)	25" (63.5)
	High	25" (63.5)	33" (83.8)

**Note:** Minimum height is the UL required minimum distance over a combustible or non-combustible surface. Maximum height is the maximum height to retain food quality under normal conditions

**See page 4 for additional UL mounting clearance requirements.**

**Approvals**

Date: \_\_\_\_\_



Setting the Standard™

www.vollrathco.com

The Vollrath Company, L.L.C.  
 1236 North 18th Street  
 Sheboygan, WI 53082-0611  
 U.S.A.  
 Main Tel: 800.624.2051  
 Service Tel: 800.628.0832  
 FAX: 800.752.5620

Vollrath of Canada, Co.  
 Tel: 800.695.8560  
 FAX: 800.752.5620

# CAYENNE® HEAT STRIPS: HARD WIRED

## ELECTRICAL RATING

Strip Length	Wattage	Base Model	Heater Wattage		Amp Draw								
					120V <sup>①</sup>			208V			240V		
			Single	Dual	Single	Dual	Lights Only 120V	Single	Dual	Lights Only 120V/208V	Single	Dual	Lights Only 120V/240V
18" (45.7)	Low	72701	300	600	2.5	5.0	0.70	1.4	2.9	0.70	1.3	2.5	0.70
	Medium	72702	415	830	3.5	6.9		2.0	4.0		1.7	3.5	
	High	72703	540	1080	4.5	9.0		2.6	5.2		2.3	4.5	
24" (60.9)	Low	72704	400	800	3.3	6.7		1.9	3.8		1.7	3.3	
	Medium	72705	550	1100	4.6	9.2		2.6	5.3		2.3	4.6	
	High	72706	720	1440	6.0	12.0		3.5	6.9		3.0	6.0	
30" (76.2)	Low	72707	510	1020	4.3	8.5		2.5	4.9		2.1	4.3	
	Medium	72708	690	1380	5.8	11.5		3.3	6.6		2.9	5.8	
	High	72709	900	1800	7.5	15.0		4.3	8.7		3.8	7.5	
36" (91.4)	Low	72710	610	1220	5.1	10.2	2.9	5.9	2.5	5.1			
	Medium	72711	825	1650	6.9	13.8	4.0	7.9	3.4	6.9			
	High	72712	1080	2160	9.0	18.0	5.2	10.4	4.5	9.0			
42" (106.6)	Low	72713	720	1440	6.0	12.0	3.5	6.9	3.0	6.0			
	Medium	72714	965	1930	8.0	16.1	4.6	9.3	4.0	8.0			
	High	72715	1260	2520	10.5	21.0	6.1	12.1	5.3	10.5			
48" (121.9)	Low	72716	820	1640	6.8	13.7	3.9	7.9	3.4	6.8			
	Medium	72717	1100	2200	9.2	18.3	5.3	10.6	4.6	9.2			
	High	72718	1435	2870	12.0	23.9	6.9	13.8	6.0	12.0			
54" (137.1)	Low	72719	925	1850	7.7	15.4	4.4	8.9	3.9	7.7			
	Medium	72720	1240	2480	10.3	20.7	6.0	11.9	5.2	10.3			
	High	72721	1615	3230	13.5	26.9	7.8	15.5	6.7	13.5			
60" (152.4)	Low	72722	1025	2050	8.5	17.1	4.9	9.9	4.3	8.5			
	Medium	72723	1380	2760	11.5	23.0	6.6	13.3	5.8	11.5			
	High	72724	1800	3600	15.0	30.0	8.7	17.3	7.5	15.0			
66" (167.6)	Low	72725	1120	2240	9.3	18.7	5.4	10.8	4.7	9.3			
	Medium	72726	1515	3030	12.6	25.3	7.3	14.6	6.3	12.6			
	High <sup>②</sup>	72727	1980	3960	N/A	N/A	9.5	19.0	8.3	16.5			
72" (182.8)	Low	72728	1230	2460	10.3	20.5	5.9	11.8	5.1	10.3			
	Medium	72729	1660	3320	13.8	27.7	8.0	16.0	6.9	13.8			
	High <sup>②</sup>	72730	2160	4320	N/A	N/A	10.4	20.8	9.0	18.0			
84" (213.3)	Low	72731	1440	2880	12.0	24.0	6.9	13.8	6.0	12.0			
	Medium	72732	1930	3860	16.1	32.2	9.3	18.6	8.0	16.1			
	High	72733	2520	5040	21.0	N/A	12.1	24.2	10.5	21.0			
96" (243.8)	Low	72734	1640	3280	13.7	27.3	7.9	15.8	6.8	13.7			
	Medium	72735	2200	4400	18.3	36.7	10.6	21.2	9.2	18.3			
	High	72736	2870	5740	23.9	N/A	13.8	27.6	12.0	23.9			
108" (274.3)	Low	72737	1850	3700	15.4	30.8	8.9	17.8	7.7	15.4			
	Medium	72738	2480	4960	20.7	N/A	11.9	23.8	10.3	20.7			
	High	72739	3230	6460	26.9	N/A	15.5	31.1	13.5	26.9			
120" (304.8)	Low	72740	2050	4100	17.1	34.2	9.9	19.7	8.5	17.1			
	Medium	72741	2760	5520	23.0	N/A	13.3	26.5	11.5	23.0			
	High	72742	3600	7200	30.0	N/A	17.3	34.6	15.0	30.0			
132" (335.2)	Low	72743	2240	4480	18.7	37.3	10.8	21.5	9.3	18.7			
	Medium	72744	3030	6060	25.3	N/A	14.6	29.1	12.6	25.3			
	High <sup>②</sup>	72745	3960	7920	N/A	N/A	19.0	38.1	16.5	33.0			
144" (365.7)	Low	72746	2460	4920	20.5	N/A	11.8	23.7	10.3	20.5			
	Medium	72747	3320	6640	27.7	N/A	16.0	31.9	13.8	27.7			
	High <sup>②</sup>	72748	4320	8640	N/A	N/A	20.8	41.5	18.0	36.0			

① 120V units not available over 40 amps.

② 120V High Wattage units not available in 66" (167.6 cm), 72" (182.8 cm), 132" (335.2 cm) and 144" (365.7 cm) lengths.

## LEAD WIRE SUPPLIED

Control Option	Suffix	Supplied With
No Control	5	42" (60.9 cm) lead wire encased in 36" (91.4 cm) of conduit
Remote Toggle	6	
Remote Infinite	7	
Onboard Toggle <sup>③</sup>	9	6" (15.2 cm) pigtail

③ Not available on high wattage units.

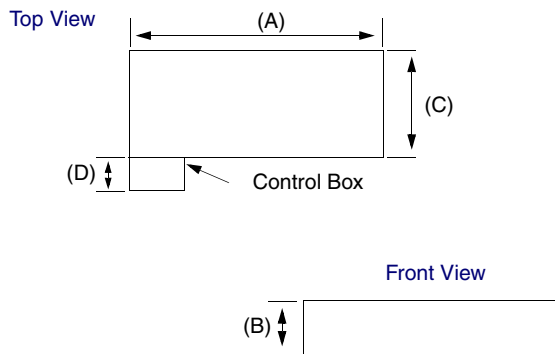
# CAYENNE® HEAT STRIPS: HARD WIRED

## SHIPPING WEIGHTS - Lbs. (kg)

Strip Length	Shipping Weights								
	Single		Single with Lights		Dual		Dual with Lights		
	Onboard Control	Remote Control	Onboard Control	Remote Control	Onboard Control	Remote Control	Onboard Control	Remote Control	
18" (45.7)	6.1 (2.7)	7.1 (3.2)	9.2 (4.1)	10.2 (4.5)	14.0 (6.3)	15.0 (6.7)	14.3 (6.4)	15.3 (6.8)	
24" (60.9)	7.2 (3.2)	8.2 (3.6)	11.0 (4.9)	12.0 (5.4)	16.8 (7.5)	17.8 (8.0)	17.1 (7.7)	18.1 (8.1)	
30" (76.2)	8.3 (3.7)	9.2 (4.1)	12.9 (5.8)	13.9 (6.2)	19.8 (8.9)	20.8 (9.3)	20.2 (9.0)	21.1 (9.5)	
36" (91.4)	9.3 (4.1)	10.3 (4.6)	14.7 (6.6)	15.6 (7.0)	22.7 (10.2)	23.6 (10.6)	23.3 (10.4)	24.3 (10.9)	
42" (106.6)	10.4 (4.6)	11.4 (5.1)	16.4 (7.3)	17.4 (7.8)	25.5 (11.4)	26.4 (11.8)	26.1 (11.7)	27.1 (12.2)	
48" (121.9)	11.5 (5.1)	12.5 (5.6)	18.1 (8.1)	19.1 (8.6)	28.3 (12.7)	29.3 (13.1)	28.9 (13.0)	29.9 (13.4)	
54" (137.1)	12.7 (5.7)	13.6 (6.1)	20.0 (9.0)	21.0 (9.4)	31.3 (14.0)	32.3 (14.5)	32.3 (14.5)	33.2 (14.4)	
60" (152.4)	13.8 (6.2)	14.8 (6.6)	21.9 (9.8)	22.9 (10.3)	34.4 (15.4)	35.4 (15.9)	35.3 (15.8)	36.3 (16.3)	
66" (167.6)	15.0 (6.7)	16.0 (7.2)	23.8 (10.7)	24.7 (11.1)	37.4 (16.8)	38.4 (17.2)	38.4 (17.2)	39.3 (17.6)	
72" (182.8)	16.2 (7.2)	17.2 (7.7)	26.2 (11.7)	27.2 (12.2)	41.0 (18.4)	42.0 (18.9)	42.0 (18.9)	42.9 (19.3)	
84" (213.3) <sup>①</sup>	unit only	20.2 (9.0)	22.1 (9.9)	31.9 (14.3)	33.9 (15.2)	49.4 (22.2)	51.4 (23.1)	50.7 (22.8)	52.6 (23.6)
	with skid	61.2 (27.5)	63.1 (28.4)	72.9 (32.8)	74.9 (33.7)	90.4 (40.6)	92.4 (41.5)	91.7 (41.2)	93.6 (42.1)
96" (243.8) <sup>①</sup>	unit only	22.5 (10.1)	24.5 (11.0)	35.7 (16.0)	37.6 (16.9)	55.5 (24.9)	57.5 (25.8)	56.8 (25.5)	58.7 (26.4)
	with skid	71.5 (32.2)	73.5 (33.1)	84.7 (38.1)	86.6 (38.9)	104.5 (47)	106.5 (47.9)	105.8 (47.6)	107.7 (48.4)
108" (274.3) <sup>①</sup>	unit only	24.9 (11.2)	26.8 (12.0)	39.4 (17.7)	41.4 (18.6)	61.6 (27.7)	63.6 (28.6)	63.5 (28.5)	65.5 (29.4)
	with skid	82.9 (37.3)	84.8 (38.1)	97.4 (43.8)	99.4 (44.7)	119.6 (53.8)	121.6 (54.7)	121.5 (54.6)	123.5 (55.5)
120" (304.8) <sup>①</sup>	unit only	27.2 (12.2)	29.2 (13.1)	43.2 (19.4)	45.1 (20.3)	67.8 (30.5)	69.7 (31.3)	69.6 (32.3)	71.6 (32.2)
	with skid	93.2 (41.9)	95.2 (42.8)	109.2 (49)	111.1 (49.9)	133.8 (60.21)	135.7 (61)	135.6 (61)	137.6 (61.9)
132" (335.2) <sup>①</sup>	unit only	29.6 (13.3)	31.5 (14.1)	46.9 (21.1)	48.9 (22.0)	73.9 (33.2)	75.8 (34.1)	75.7 (34.0)	77.7 (34.9)
	with skid	104.6 (47.1)	106.5 (47.9)	121.9 (54.8)	123.9 (55.7)	148.9 (67)	150.8 (67.8)	150.7 (67.8)	152.7 (68.7)
144" (365.7) <sup>①</sup>	unit only	31.9 (14.3)	33.9 (15.2)	51.8 (23.3)	53.7 (24.1)	81.1 (36.5)	83.0 (37.3)	82.9 (37.3)	84.9 (38.2)
	with skid	114.9 (51.7)	116.9 (52.6)	134.8 (60.6)	136.7 (61.5)	164.1 (73.8)	166 (74.7)	165.9 (74.6)	167.9 (75.5)

① Units longer than 84" (213.3 cm) require a supporting skid for shipping.

## DIMENSIONS - Inches (cm)



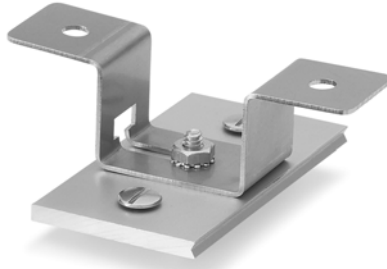
Strip Stated Length (A)	Control Box Width (D)	Width (C)			Height (B)
		Single	Single with Lights	Dual/Dual with Lights	
18" (45.7)	3" (7.6) All Models	6" (15.2) All Models	9.125" (23.1) All Models	15.25" (38.7) All Models	2.88" (7.3) All Models
24" (60.9)					
30" (76.2)					
36" (91.4)					
42" (106.6)					
48" (121.9)					
54" (137.1)					
60" (152.4)					
66" (167.6)					
72" (182.8)					
84" (213.3)					
96" (243.8)					
108" (274.3)					
120" (304.8)					
132" (335.2)					
144" (365.7)					

# CAYENNE® HEAT STRIPS: HARD WIRED

## MOUNTING OPTIONS

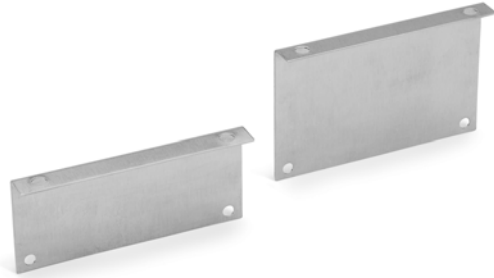
Hard wired units are supplied with mounting tabs. Additionally, the following mounting options are available for ordering.

**Center Mounting Brackets**



Item No.	Description
44140	1" (2.5 cm)
44145	2" (5.1 cm)

**Top Surface Mounting Brackets (2 per set)**



Item No.	Description
44545	1" (2.5 cm)
44546	2" (5.1 cm)

### Recommended Number of Center Mount Brackets

Length	Single Units	Dual Units
18" (45.7)	2	4
24" (60.9)	3	6
30" (76.2)	3	6
36" (91.4)	3	6
42" (106.6)	4	8
48" (121.9)	4	8
54" (137.1)	4	8
60" (152.4)	5	10
66" (167.6)	5	10
72" (182.8)	5	10
84" (213.3)	6	12
96" (243.8)	7	14
108" (274.3)	7	14
120" (304.8)	8	16
132" (335.2)	9	18
144" (365.7)	9	18

### Required Number of Top Surface Mount Brackets

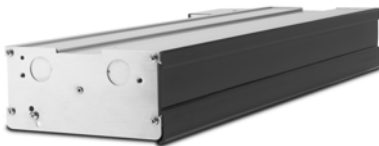
Configuration	Number of Sets
Single/Single with Lights	1 Set
Dual/Dual with Lights	2 Sets

## UL MOUNTING CLEARANCE REQUIREMENTS

Clearance	Non-Combustible Surface	Combustible Surface
Top of strip to surface above (minimum)	1" (2.5 cm)	2" (5.1 cm)
Bottom of strip to surface below	See page 1.	
Side of strip to adjacent surface (minimum)	1" (2.5 cm)	5" (12.7 cm)
Setback from front opening on pass thru application: maximum of 8" (20.3 cm)		

## ACCESSORIES

**Kool-Touch Trim**



Item No.	Description
17897xx	Enter unit length at end of part number to add this accessory. One set includes operator and server-side coverage. Units over 72" (182.8) require two sets. Field trimming required.

**Replacement Teflon® Coated Bulbs**

Item No.	Description	Case Lot
23236	Teflon® coated bulbs, shatterproof bulbs	4

ⓘ No broken cases.



www.vollrathco.com

The Vollrath Company, L.L.C.  
 1236 North 18th Street  
 Sheboygan, WI 53082-0611  
 U.S.A.  
 Main Tel: 800.624.2051  
 Service Tel: 800.628.0832  
 FAX: 800.752.5620

Vollrath of Canada, Co.  
 Tel: 800.695.8560  
 FAX: 800.752.5620