



Outperform every day.™

Project:

Item Number:

Quantity:

Flush Mount Dispensers and Holders

The Vollrath Company, L.L.C.

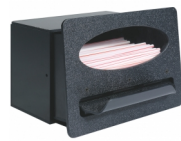
FLUSH MOUNT DISPENSERS AND HOLDERS



FMN-1



FMHVN-1



FMS-1A



FMS-3



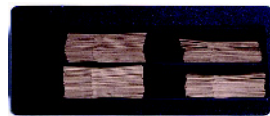
FMT-1



MT-1.5



MR-1.5



MB-2



TT-1

Flush Mount Dispensers and Holders

DESCRIPTION

Vollrath's line of Flush Mount Dispensers and Holders keep busy self-serve stations neat and organized, making it easy for customers to find what they need. The multi-compartment dispensers provide maximum storage in a small footprint.

MODELS

- FMN-1** Napkin Dispenser, Accommodates 5"H x 6½"W (12.7H x 16.5W cm) Folded Napkin
- FMHVN-1** Napkin Dispenser, High Volume, Accommodates 5"H x 6½"W (12.7H x 16.5W cm) Folded Napkin
- FMHVN-2** Napkin Dispenser, High Volume, Accommodates 3½"H x 6½"W (8.9H x 16.3W cm) Folded Napkin
- FMNL-1** 1 Napkin Dispenser and 1 Lid Holder, Horizontal Accommodates 5"H x 6½"W (12.7H x 16.5W cm) Folded Napkin
- FMS-1A** Unwrapped, One-At-A-Time Straw Dispenser, up to 8" (20.3 cm) Long x ¼" (.64) Diameter
- FMS-2A** Stir Stick Dispenser, up to 6" (15.2 cm) Long x ⅛" (.3) Diameter
- FMS-3** Wrapped Straw Holder, 8-10" (20.3 - 25.4 cm) Straws
- FMS-4** Wrapped Straw Holder, 10-12" (25.4 - 30.5 cm) Straws
- FMS-5** Stir Stick Holder
- FMT-1** Waxed Tissue Dispenser (Holds most mini cartons)
- MB-1** Bag Dispenser, Two Pocket
- MB-2** Bag Dispenser, Four Pocket
- MR-1.5** Trash Receptacle Door with Recycled Logo, Medium
- MR-2** Trash Receptacle Door with Recycled Logo, Large
- MT-1** Trash Receptacle Door, Small
- MT-1.5** Trash Receptacle Door, Medium
- MT-2** Trash Receptacle Door, Large
- TT-1** Trash Receptacle Insert, Small
- TT-2** Trash Receptacle Insert, Large

FEATURES

- Impact-resistant molded thermoplastic construction
- Mounts flush with counter
- Includes mounting screws

Napkin Dispensers

| Feature | FMN-1 | FMHVN-1 | FMHVN-2 | FMNL-1 |
|---|------------------------|---------|---------|------------|
| Spring loaded for continuous dispensing | yes | yes | yes | yes |
| Napkin restricter (face plate) reduces waste and easy refilling | no | yes | yes | no |
| Mounting | Horizontal or Vertical | | | Horizontal |
| Capacity | 90 | 500 | 500 | 100 |

Straw Dispensers

- FMS-1A is a 2-box system for easy loading
- FMS-3, FMS-4 and FMS-5 feature two compartments for different size straws

Stir Stick Dispenser

- FMS-2A is a 2-box system for easy loading

Waxed Tissue Dispenser

- 2-box system for easy loading
- Accommodates most mini-size wax tissue cartons

Bag Dispensers

- Available in two or four pocket configurations

Trash Receptacle Door and Inserts

- Place trash receptacles in easy to locate and use locations

Due to continued product improvement, please consult www.vollrath.com for current product specifications.

WARRANTY: All models shown come with Vollrath's standard warranty against defects in materials and workmanship. For full warranty details, please refer to www.vollrath.com.

| Approvals | Date |
|-----------|------|
| | |



Outperform every day.™

www.vollrath.com

The Vollrath Company, L.L.C.
 1236 North 18th Street
 Sheboygan, WI 53081-3201 U.S.A.
 Customer Service: 800.628.0830
 Canada Customer Service: 800.695.8560
 Main Fax: 800.752.5620 or 920.459.6573

Technical Services: 800.628.0832
 Technical Services Fax: 920.459.5462

FLUSH MOUNT DISPENSERS AND HOLDERS

SPECIFICATIONS

| Item | Description | Dimensions IN (CM) | | | | Shipping Weight LB (KG) |
|---------|--|---------------------|--------------------|---------------|---------------------------|----------------------------|
| | | Height | Width | Depth | Cutout Size | |
| FMN-1 | Napkin Dispenser, Accommodates 5"H x 6½"W (12.7H x 16.5W cm) Folded Napkin | 8½ (21.6) | 6¼ (15.9) | 5⅝ (13.7) | 7⅞ x 5⅝ (19.2 x 13.5) | 3 (1.4) |
| FMHVN-1 | Napkin Dispenser, High Volume, Accommodates 5"H x 6½"W (12.7H x 16.5W cm) Folded Napkin | 8½ (21.6) | 7⅞ (18.1) | 19½ (49.5) | 7⅝ x 6⅜ (19.4 x 15.7) | 3 (1.4) |
| FMHVN-2 | Napkin Dispenser, High Volume, Accommodates 3½"H x 6½"W (8.9H x 16.3W cm) Folded Napkin | 8½ (21.6) | 5⅝ (14.3) | 19½ (49.5) | 7⅝ x 4⅞ (19.4 x 11.9) | 8 (3.6) |
| FMNL-1 | 1 Napkin Dispenser and 1 Lid Holder, Horizontal Accommodates 5"H x 6½"W (12.7H x 16.5W cm) or 5½"H x 6½"W (14H x 16.5W cm) Folded Napkin | 8 (20.3) | 11⅞ (28) | 7½ (19.1) | 7⅞ x 10⅞ (17.9 x 25.7) | 5 (2.3) |
| FMS-1A | Unwrapped, One-At-A-Time Straw Dispenser, 8" | 7⅞ (18.6) | 10⅝ (27) | 5⅝ (13.7) | 6⅝ x 9⅝ (16.8 x 24.4) | 5 (2.3) |
| FMS-2A | Stir Stick Dispenser, 6" | 7⅞ (18.6) | 8¼ (21) | 5⅝ (13.7) | 7⅞ x 6⅜ (18.6 x 14.3) | 6 (2.7) |
| FMS-3 | Wrapped Straw Holder, 8-10" Straws | 7¼ (18.4) | 6½ (16.5) | 7½ (19.1) | 6⅝ x 5⅝ (16.2 x 14.3) | 3 (1.4) |
| FMS-4 | Wrapped Straw Holder, 10-12" Straws | 7¼ (18.4) | 6½ (16.5) | 13 (33) | 6⅝ x 5⅝ (16.2 x 14.3) | 4 (1.8) |
| FMS-5 | Stir Stick Holder | 7¼ (18.4) | 6½ (16.5) | 5⅝ (14.9) | 6⅝ x 5⅝ (16.2 x 14.3) | 3 (1.4) |
| FMT-1 | Waxed Tissue Dispenser (Holds most mini cartons) | 8 (20.3) | 8¼ (21) | 3½ (8.9) | 7⅞ x 7⅞ (17.9 x 18.6) | 3 (1.4) |
| MB-1 | Bag Dispenser, Two Pocket | 7½ (19.1) | 10⅝ (27) | 11¼ (28.6) | 6⅞ x 9⅞ (16.7 x 24.6) | 4.2 (1.9) |
| MB-2 | Bag Dispenser, Four Pocket | 7½ (19.1) | 17⅝ (44.8) | 11¼ (28.6) | 6⅞ x 16⅞ (16.7 x 42.4) | 5 (2.3) |
| MR-1.5 | Trash Receptacle Door with Recycled Logo, Medium | 7½ (19.1) | 13¼ (33.7) | 2¼ (5.7) | 6⅞ x 12⅞ (16.7 x 31.3) | 2 (.9) |
| MR-2 | Trash Receptacle Door with Recycled Logo, Large | 7½ (19.1) | 17⅝ (44.8) | 2¼ (5.7) | 6⅞ x 16⅞ (16.7 x 42.4) | 2 (.9) |
| MT-1 | Trash Receptacle Door, Small | 7½ (19.1) | 10⅝ (27) | 2¼ (5.7) | 6⅞ x 9⅞ (16.7 x 24.6) | 2 (.9) |
| MT-1.5 | Trash Receptacle Door, Medium | 7½ (19.1) | 13¼ (33.7) | 2¼ (5.7) | 6⅞ x 12⅞ (16.7 x 31.3) | 2 (.9) |
| MT-2 | Trash Receptacle Door, Large | 7½ (19.1) | 17⅝ (44.8) | 2¼ (5.7) | 6⅞ x 16⅞ (16.7 x 42.4) | 2 (.9) |
| | | Outside Dia. | Inside Dia. | | | |
| TT-1 | Trash Receptacle Insert, Small | 7⅞ (19.4) | 6 (15.2) | 6 (15.2) | 6¼ (17.1) | 2 (.9) |
| TT-2 | Trash Receptacle Insert, Large | 9¼ (23.5) | 8 (20.3) | 6½ (16.5) | 8⅞ (21.3) | 3 (1.4) |



Outperform every day.™

www.vollrath.com

The Vollrath Company, L.L.C.
1236 North 18th Street
Sheboygan, WI 53081-3201 U.S.A.
Customer Service: 800.628.0830
Canada Customer Service: 800.695.8560
Main Fax: 800.752.5620 or 920.459.6573

Technical Services: 800.628.0832
Technical Services Fax: 920.459.5462