

# F-49 FRYER



Wells Fryer F-49 is one of the most durable and easy-to-use fryers in the industry. A swing-up element allows the frypot to be easily removed for cleaning. The low watt density heating element provides for extended oil life. Fry two different products at the same time using the two separate half-size fry baskets.

**Features**

- Two half-size, rear-hanging, interchangeable fry baskets are included with every fryer.
- Swing-up element, located below the baskets, is heavy-duty stainless steel with a low watt density.
- Element control housing has a spring-loaded support rod to secure elements when in raised position.
- Deep-drawn, removable container is made of nickel-plated steel and can hold up to fifteen pounds of oil.
- A manual reset safety thermostat will shut off the heating element power if an over-temperature condition is reached. A red signal light will indicate the over-temperature condition.
- The F-49 Fryer is Underwriters Laboratories, Inc. LISTED and meets the National Sanitation Foundation nd Canadian standards.
- A one-year warranty against defects covers parts and labor.

**Specifications**

<b>Overall Dimensions:</b>		<b>Inches</b>	<b>MM</b>
Width		14 3/4	375
Depth		23 9/16	598
Height (Incl. 4" legs)		16 3/8	416
<b>Shortening Capacity:</b>		<b>Lbs.</b>	<b>KG</b>
F-49		15	7
<b>Temperature Range:</b>		<b>Fahrenheit</b>	<b>Celsius</b>
F-49		275° to 375°	135° to 191°
<b>Pre-Heat Time to 350°F:</b>		<b>8 minutes</b>	
<b>Watts Per Hour to Maintain 350°F:</b>		<b>445</b>	
<b>Typical Production:</b>		<b>Per Hour</b>	
French Fries (2-oz. servings)		<b>240</b>	
Chicken (pounds)		<b>16</b>	
<b>Weights:</b>		<b>Lbs.</b>	<b>KG</b>
Installed		<b>35</b>	<b>16</b>
Shipped		<b>38</b>	<b>17</b>

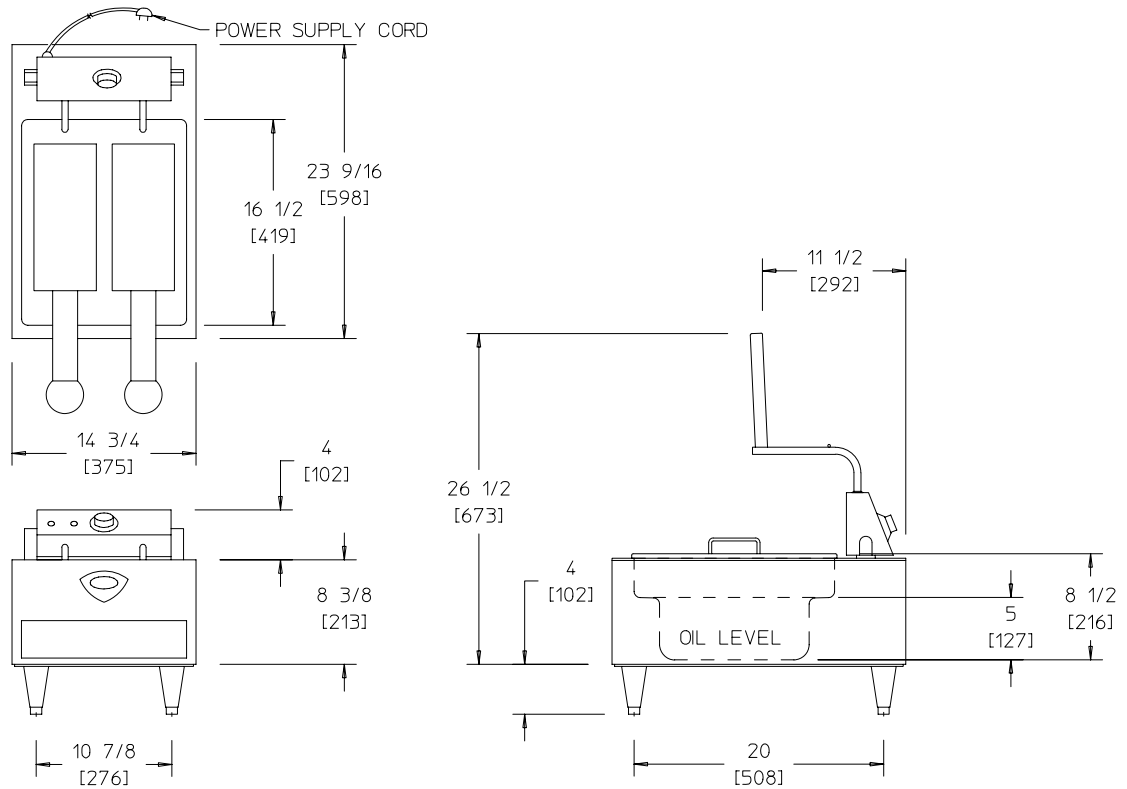
**Accessories / Options**

- Basket, half-size (2 per fry pot), 20161
- Basket, full size (1 per fry pot), 20162
- Crumb Cradle, 20690
- Fry Pot Cover, 21010
- Legs, set of four, metal, 4" adjustable, 20563





## MODEL F-49 Fryer



### DIMENSIONS: INCH [MM]

NOTE: Specifications are subject to change without notice and are not intended for installation purposes. See installation instructions at [www.wellsbloomfield.com](http://www.wellsbloomfield.com) prior to installing unit.

MODELS	VOLTS	WATTS	AMPS	PHASE	POWER SUPPLY CORD
F-49	208	4600	22.1	SINGLE	NEMA 6-30P
F-49	208	3400	16.6	SINGLE	NEMA 6-30P
	240	4600	19.1	SINGLE	NEMA 6-30P

### ELECTRICAL SPECIFICATIONS:

MINIMUM CLEARANCE REQUIRED FROM UNIT TO THE NEAREST SURFACE			
BACK	SIDE	BOTTOM	FRONT
NA	NA	NA	40
NA	NA	NA	[1016]

NOTE: Specifications are subject to change without notice.

Wells Bloomfield, A Division of Carrier Commercial Refrigeration, Inc.  
 2 ERIK CIRCLE, PO BOX 280, VERDI, NV 89439 U.S.A.  
 U.S.A.: (775) 689-5700 \* (888) 356-5362 \* FAX (800) 356-5142  
 Canada: (887)507-1700 \* (905) 507-1700 \* FAX (905) 507-1777  
 Export: (775)689-5700 \* FAX (775) 689-5975  
[www.wellsbloomfield.com](http://www.wellsbloomfield.com)

© 2006 Wells Bloomfield, A Division of Carrier Commercial Refrigeration, Inc. \* PRINTED IN THE U.S.A.  
 08/06 \* NO. 37062 (G) ECN-13104

